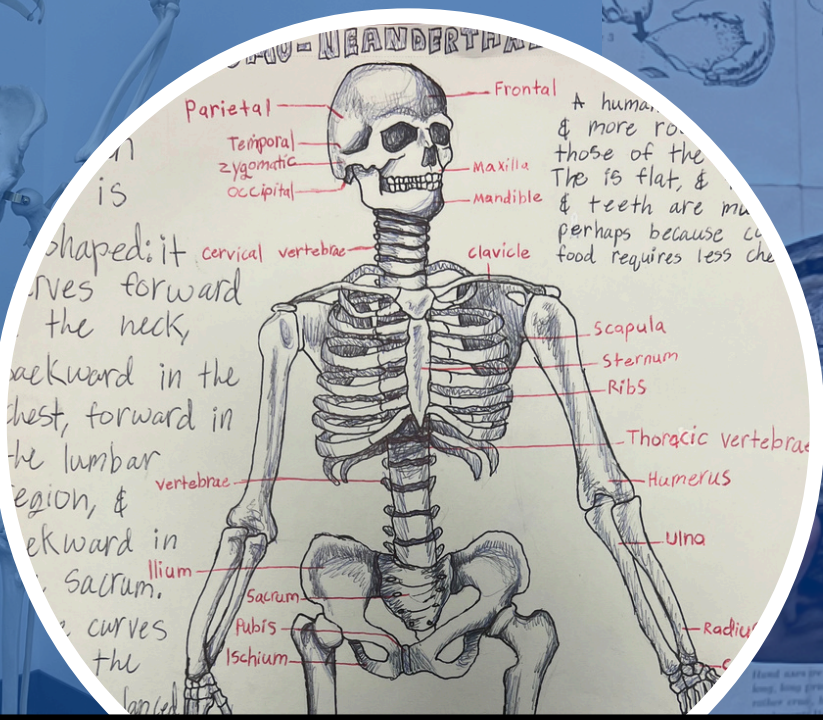


LABORATORY IN HUMAN BIOLOGICAL EVOLUTION AT A GLANCE



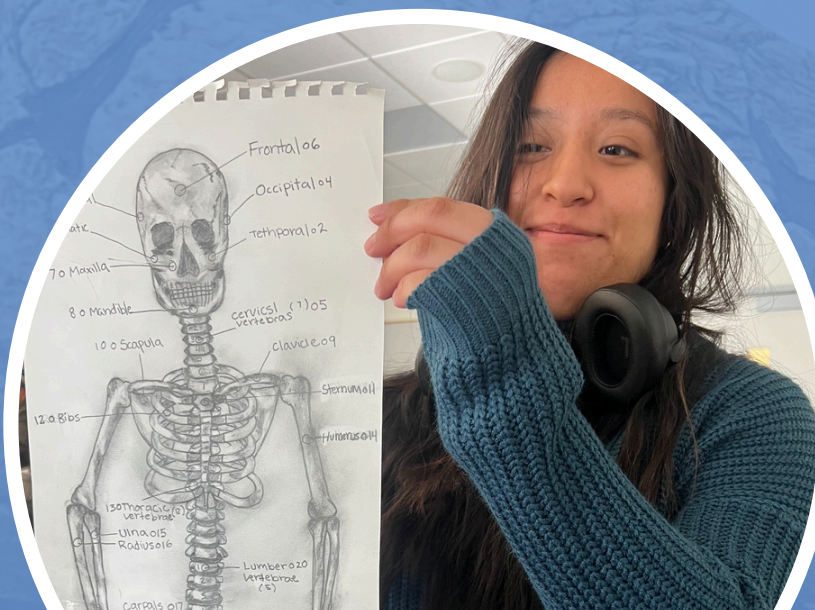
Introduction to Anthropology



Understanding the hominid fossil record



Theory & Methods in Human Biological Evolution



Cells, Tissues, Organs, and Organ Systems



Human Health, Wellness, and Disease

LABORATORY

IN HUMAN BIOLOGICAL EVOLUTION

PART OF THE ANTHROPOLOGY PROGRAM

ANTHRO 111 - Laboratory in Human Biological

Evolution examines the theories and methods used to understand human biological evolution. Unlike the lecture, the laboratory emphasizes and devotes more time to using the scientific method in a series of hands-on practicums. Students learn from a collection of fossil hominid skeletons, replica artifacts and fossils, and our closest biological relatives, the living monkeys and apes. In this laboratory, students must observe primates in a captive setting (the Los Angeles Zoo) and make one trip to the Natural History Museum to observe natural materials and human material collections. Students learn to approach and solve critical human conditions by understanding human diets, genetics, variation, diseases, medicine, the natural world, living primates, and the human skeletal system.

Contact Information:

Professor Garcia / garciasa4@lattc.edu



REGISTER NOW!

SEE THE CLASS SCHEDULE FOR CURRENT OFFERINGS.



All anthropology courses meet transfer and degree requirements.

