

CAREER OPTIONS



Estimator • Adjust/Appraiser
• Custom Painter • Paint &
Body Equipment • Body Repair
Frame Technician • Retailer

ANNUAL SALARY



Entry level to experience

\$29,000 - \$62,000

INDUSTRY CERTIFICATIONS



Automotive Service Excellence (ASE)
I-CAR
SP/2 Certificate

PROFESSIONAL ASSOCIATIONS

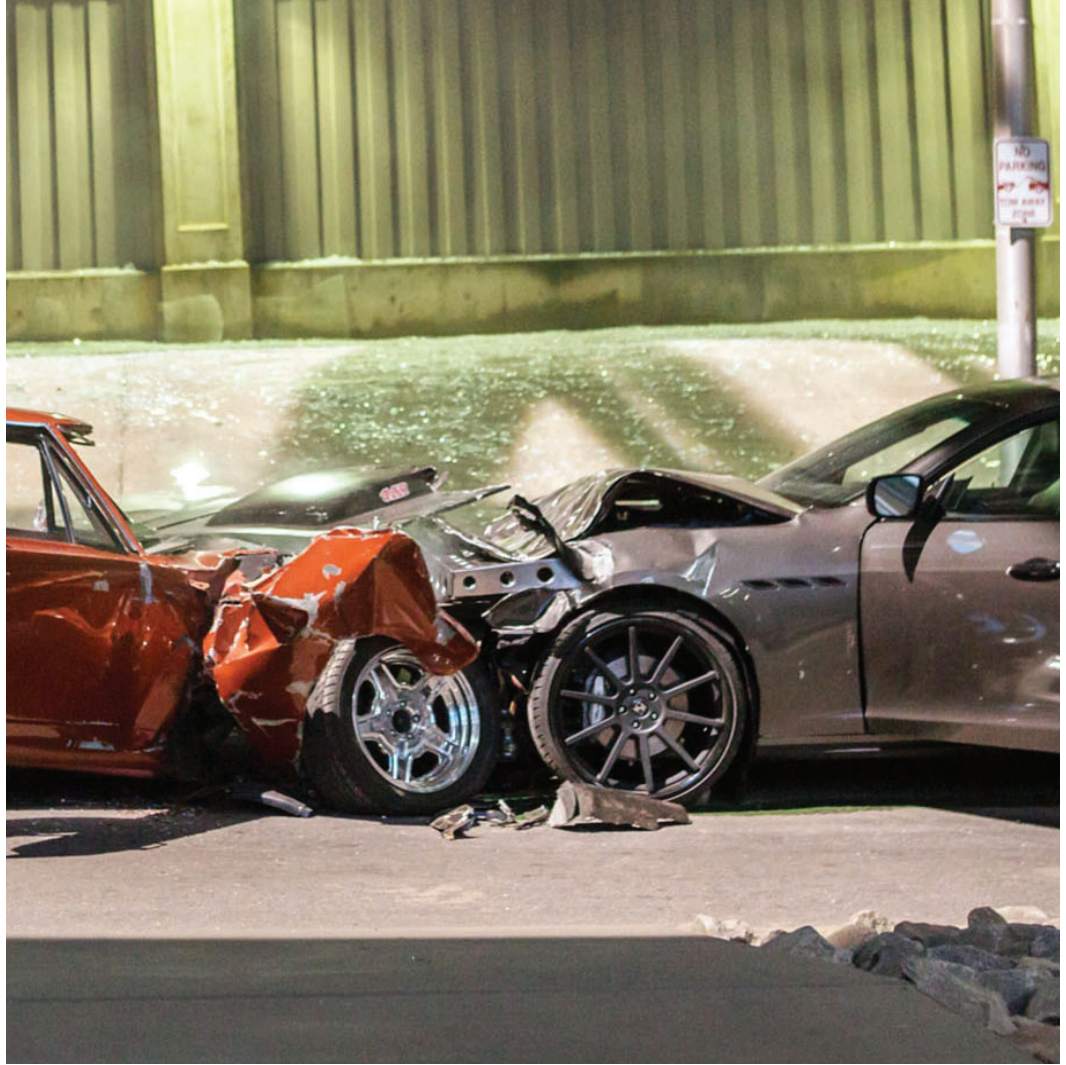


Automotive Service Association (ASA)
California Autobody Association (CAA)
National Auto Body Council (NABC)
Specialty Equipment Market Association
(SEMA)
Society of Collision Repair Specialist (SCRS)

estimated cost of TOOLS & SUPPLIES



Safety Glasses	\$1-45
Uniform Shirt	\$25-45
Uniform Pants	\$15-30
Work Shoes/Boots (oil and slip resistant)	\$30-200
Tools	\$500-1,500
Textbooks	\$235



Los Angeles Trade-Technical College

AUTOMOTIVE COLLISION REPAIR

Los Angeles is a leading collision capital center in the automotive design world. Insurance companies are increasingly demanding Auto Collision Technicians trained in damage cost estimations. Technicians use highly sophisticated devices, such as laser for straightening frames, computer for mixing paint, and dust control contamination vacuum tools for smoothing paint.

By fulfilling the program requirements, students are proficient in a variety of automotive collision techniques and will have the knowledge and skills necessary to maintain, repair, and diagnose body and fender repairs.



Degree and Certificate

To earn an **Associate in Science degree** students should complete the 36 units of Required Courses and 10 units of Major Electives with a "C" or better in each course, and the general education courses under the **GE Graduation Plan**.

Requirements for the **Certificate of Achievement** may be met by completing 36 units of Required Courses and 10 units of Major Electives with a "C" or better in each course.

STUDENT SUPPORT

The **ATM Pathway Counselor** can assist you to plan your **academic, transfer, and career success** while connecting you to essential resources.



Award	Required Courses	Major Electives	GE Graduation Plan
○ Associate of Science Degree	36 units	10 units	~18 units
● Certificate	36 units	-	

Required Courses ○●

Term	Subject	Course Title	Units
Semester I	AUTOCOR 112	Auto Body Construction, Repair and Welding Fundamentals	9
Semester II	AUTOCOR 122	Intermediate Collision Repair-Parts Replacement, Metal Repair, Frame Straightening & Refinishing	9
Semester III	AUTOCOR 132	Unitized Body Panel, Section, & Frame; Replacement & Alignment	9
Semester IV	AUTOCOR 142	Advanced Automotive Collision Repair, Estimating, Refinishing, Color Matching	9

Major Electives ○●

Select at least 10 units from the courses below

Subject	Course Title	Units
AUTOCOR 148	Paint Preparation and Application	3
AUTOCOR 149	Estimating Body Damage	3
AUTOCOR 185	Directed Study	1
AUTOCOR 226	Auto Collision Repair I	3
AUTOCOR 227	Auto Body & Fender II	3

GE Graduation Plan Courses ○

Meet with the ATM Pathway Counselor to select **Guided Choices** sequence of courses or other GE courses

	Units
Guided Choices	~18
Area A: Physics 11	
Area B: History 12	
Area C: Humanities 60	
Area D1: English 101	
Area D2: Mathematics 125	
Area E:	

Los Angeles Trade Technical College

School of Advanced Transportation & Manufacturing (ATM)

ATMPathway@lattc.edu | www.lattc.edu/ATM | 213.763.7081

400 W. Washington Blvd. | Suite B1-225 | Los Angeles, California 90015



LOS ANGELES TRADE-TECHNICAL COLLEGE

REV 08012019